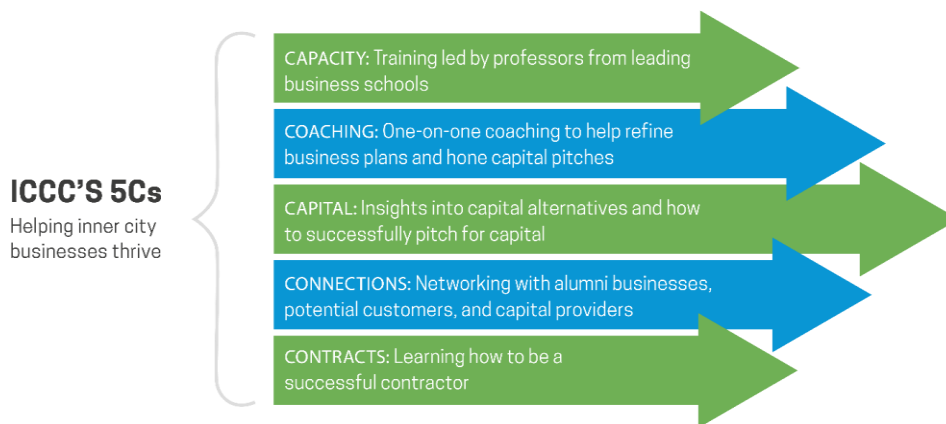


# INNER CITY CAPITAL CONNECTIONS

Kaiser Permanente & ICC Los Angeles Cohort: Tuesday, August 20, 2019

Kaiser Permanente is partnering with [Inner City Capital Connections](#) (ICCC), a program of the [Initiative for a Competitive Inner City](#), to strengthen small businesses and promote economic prosperity in economically-challenged urban communities. Because economic vitality contributes to good health, Kaiser Permanente is sponsoring ICCC cohorts in underserved communities where we operate.

ICCC's tuition-free executive education and training program has helped thousands of small businesses in underserved communities create and maintain sustainable growth in revenue, profitability, and employment. The ICCC training has been developed for small business owners of all expertise levels and provides:



Since 2005, **2,221 ICCC alumni** have averaged **160% growth** in revenue, created **19,907 jobs**, and raised **\$1.92 billion** in capital. As our alumni succeed, we promote sustainable business growth in underserved communities across the country, and your partnership is vital to this effort.

## **Program Qualifications**

A business must meet all of the following criteria in order to be eligible for participation in ICCC: \*

- Be an independent, for-profit or non-profit corporation, partnership or proprietorship.
- Have its headquarters or more than 51% of its physical operations located in an economically-distressed area **OR** have more than 40% of employees residing in an economically-distressed area.
- Be past the survival stage. We typically work with businesses with annual revenues of at least \$500,000.
- Have been in operation for two years or more, and past the proof-of-concept stage. ICCC does not accept start-up companies.

*\*On a case-by-case basis, ICCC will consider businesses that do not meet all of the specified criteria on the recommendation of a nominator.*

**Do you know of any businesses that fit this profile?** If so, **NOMINATE** them today at [nominate.iccapitalconnections.org](http://nominate.iccapitalconnections.org) and encourage them to apply.

**Does your business fit this profile?** If so, **APPLY** today at [apply.iccapitalconnections.org](http://apply.iccapitalconnections.org).

For alumni success stories, see our **2018 Impact Report** at [impact.iccapitalconnections.org](http://impact.iccapitalconnections.org).

For questions, contact Nate Root, *Senior Program Coordinator*, at [nroot@icic.org](mailto:nroot@icic.org) or (617) 238-3030.

# INNER CITY CAPITAL CONNECTIONS

## PROGRAM STRUCTURE



### NATIONAL CONFERENCE

The culminating conference centers around helping participants refine their capital pitch and gain access to capital providers. Participants exit the program with a strong sense of capital alternatives, a sharpened strategic focus, a vibrant network, and a plethora of capital connections.



### OPENING SEMINAR

The ICCC executive education program kicks off with a full-day seminar. Classes are led by professors from top-line business schools, and content taught is practical and actionable. These classes set the foundation for the rest of the program.



### COACHING

One-on-one coaching gives participants individualized feedback and helps them position their business for long-term success. Coaching helps individuals refine their pitch for capital and/or tackle specific business challenges.



### WEBINARS

Virtual sessions complement and deepen learnings from the opening seminar. Webinars are led by experienced practitioners and are geared towards helping participants overcome their growth challenges.