

The San Gabriel Valley: Valley:

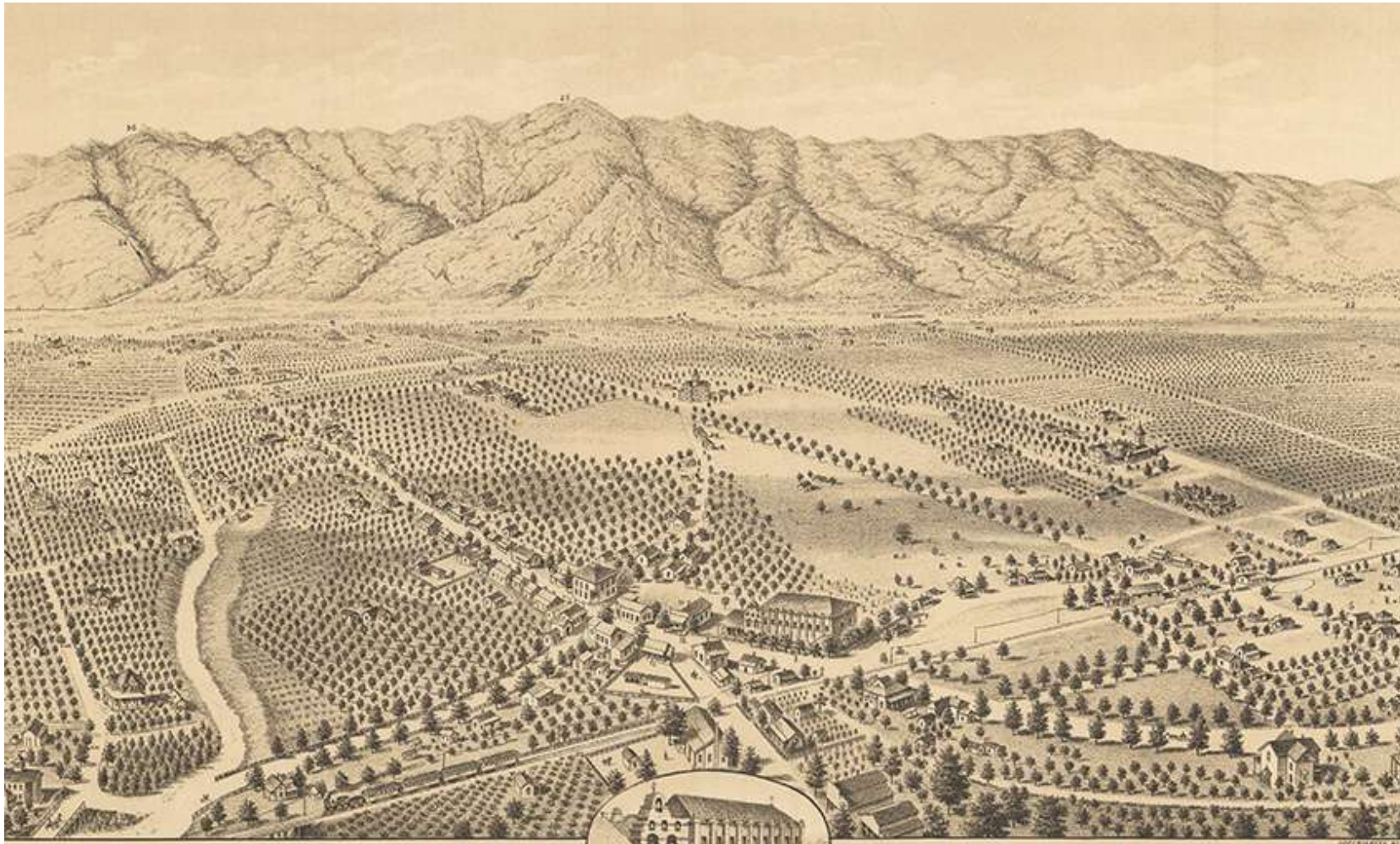
From Citrus Paradise
to Knowledge City

Michael Woo

Dean, College of Environmental
Design

California State Polytechnic
University, Pomona





Citrus
paradise,
circa 1893

- 1 Mission Church.
- 2 Episcopal Church.
- 3 Public School.
- 4 Hotel and Stage View.
- 5 Wagon and Blacksmith Shop.
- 6 Hotel Elva San Gabriel.
- 7 Methodist's.
- 8 Wilson Ranch.
- 9 The Mission Ranch.
- 10 N. T. Ogden.
- 11 Dry Goods and Grocery Store.
- 12 Jackson's Next Orange Orchard.
- 13 J. W. Smith's Orange Orchard.
- 14 Sutter Shop.
- 15 Santa Anita.
- 16 Amador.
- 17 Santa Maria Villa.
- 18 Santa Maria.
- 19 Mountains.
- 20 Duane.

VIEW OF SAN



GABRIEL, CAL.

- 21 Fruit and Raisin.
- 22 Avoca.
- 23 Graham.
- 24 Mount Lowe Railway.
- 25 Wilson Park.
- 26 Hotel Winery.
- 27 Linnach Park.
- 28 Market.
- 29 Chapman Place.
- 30 Antonio Place.
- 31 Wilson Heights.
- 32 Alameda Grove.
- 33 Cooper Ranch.
- 34 Station Orchard.
- 35 Johnson.
- 36 Mount Lowe.
- 37 Santa Anita.
- 38 Malak's.
- 39 Rapid Transit.
- 40 Santa Fe.

The irresistibility of sunshine tourism



Built upon a legacy of Spanish colonialism





Water and
economic
growth

(the impact of
conscious
decisions)

“Autopia”

Freeways and suburbia





Who are the people of the San Gabriel Valley today?

RACE AND HISPANIC ORIGIN	NUMBER	%
Latino	855,755	46%
Asian American	524,716	28%
White	398,740	22%
Black or African American	81,607	4%
AIAN	26,061	1%
NHPI	7,187	0.4%
Total Population	1,846,796	100%

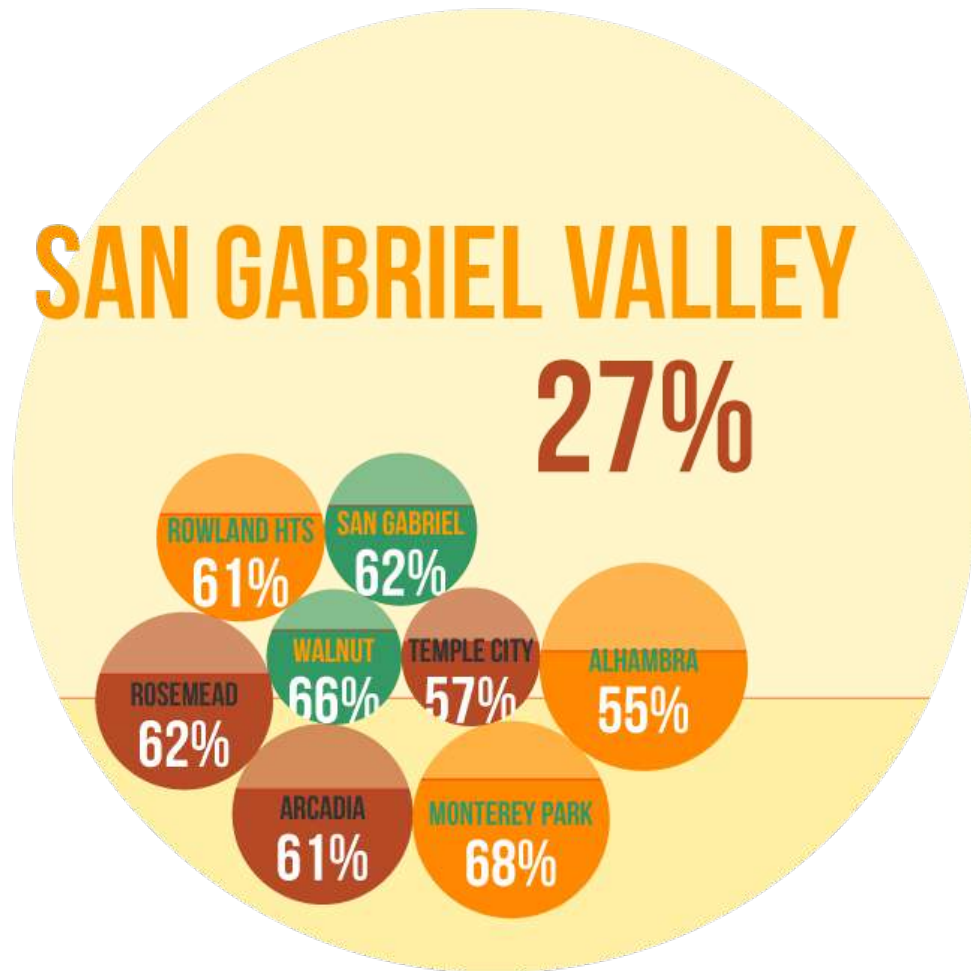


Three strategies to
make the San
Gabriel Valley a
“city of knowledge
workers”

1. Embrace the globe



“The first suburban Chinatown”
(or “the Asian Beverly Hills”?)



3 million Chinese tourists expected to visit U.S. in 2018
(average per capita spending \$7,200)



Investment incentives

(EB 5 visa: A green card for \$500,000 - \$1M and 10 new full-time jobs)



2. Build upon the education powerhouse



Already the largest single employer in the San Gabriel Valley

- Over 165,000 college students
- Over 30 colleges and universities
- More 4-year colleges and universities than Boston/Cambridge, Manhattan, Chicago
- Largest community college in the U.S. (Mt. SAC)
- City of Hope
- Caltech
- Art Center
- Claremont Colleges



Cal Poly Pomona tied for #5 nationally in “Upward Mobility Top 10”

(David Leonhardt, [New York Times](#), January 18, 2017)

- Based upon percentage of students from bottom fifth of income distribution who end up in the top three-fifths



Constant innovation is a social process

(Enrico Moretti, The New Geography of Jobs (2012))

- Geography matters
- Community matters
- Need for critical mass of highly educated workers regularly involved in the exchange of ideas (innovation hubs)
- Michael Storper on Bay Area (Genentech near UCSF) vs. SoCal (Amgen in Thousand Oaks) (The Rise and Fall of Urban Economies (2015))



3. Make the San Gabriel Valley a
"Greener Valley" to attract knowledge
workers



Reliable, affordable, sustainable alternatives to driving your own car



The San Gabriel Valley can be part of the solution to the housing crisis

- LA County has the second largest homeless population in the U.S. (about 55,000), but the largest homeless population without shelter (75% in LA compared to 5% in NYC)
- More than half of LA residents pay one-third or more of income on housing
- Average monthly rent in LA for one-bedroom apt. is \$1,340
- One out of 10 CSU students are homeless (and 1 of out 5 lack steady access to food)



Three directions for the San Gabriel Valley

1. Embrace the globe
2. Build upon the education powerhouse
3. Make the San Gabriel Valley a “Greener Valley”

