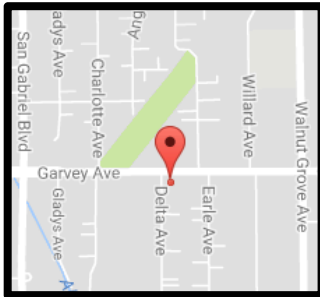


# Garvey Garden Plaza

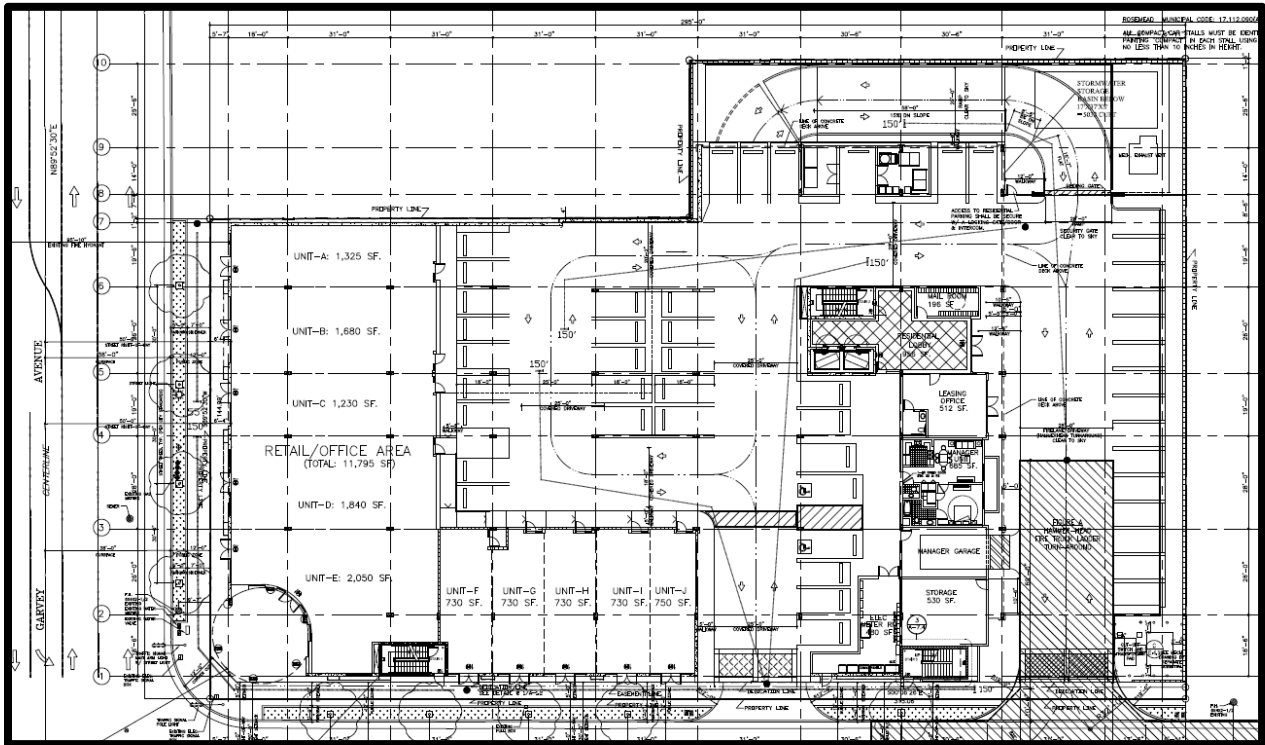
8408 Garvey Avenue (SEC Delta Avenue and Garvey Avenue)



- Under Construction
- 46 Residential Apartments
- 11,795 s.f. - Commercial (Retail/Office)
- 48 Commercial Parking Spaces

\*For more information, please contact the City of Rosemead Planning Division at (626) 569-2142.

# Site Plan



# Commercial Floor Plan

